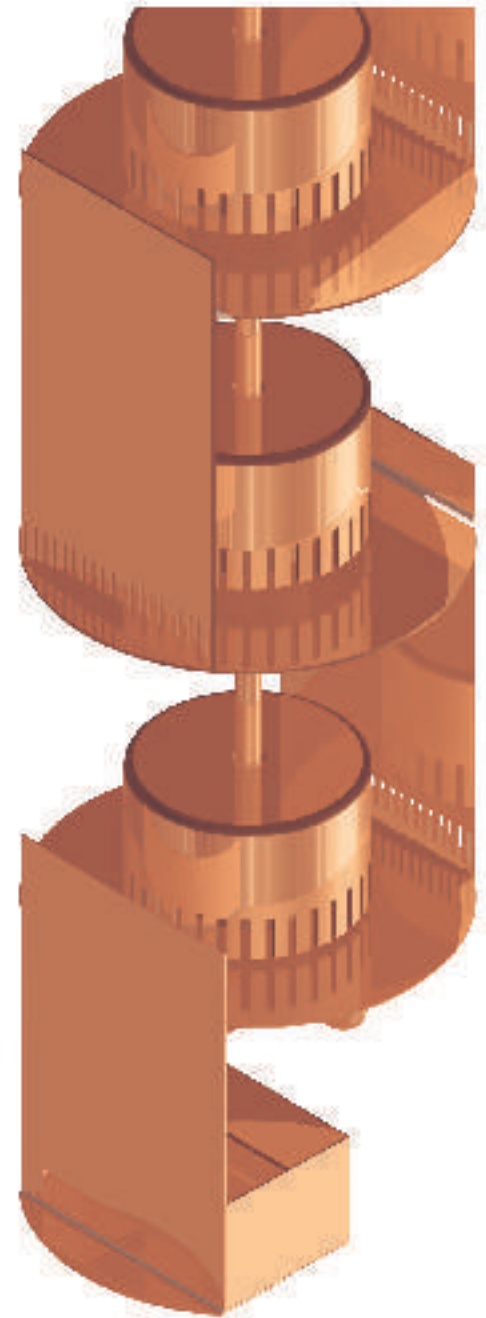
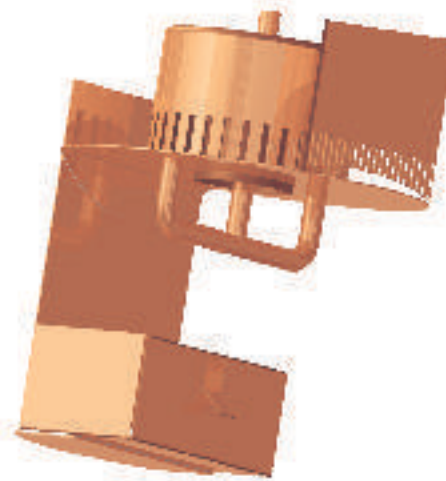




## The Single Bubble-Cap Plate Tree



Remembering that this is the method Olddog used in the Stumpy prototype, a full flavoured UJSSM with an output of 92ABV was obtained by utilising only 2 plates at pot still speed. The weirs (dams), could be increased in height from say 20mm to 30mm this would only increase the thumper action from each plate giving, if its at all possible, an even fuller flavour. The design is scaled down from Chritian CARL and other proven commercial still manufacturers costing many thousands of dollars.

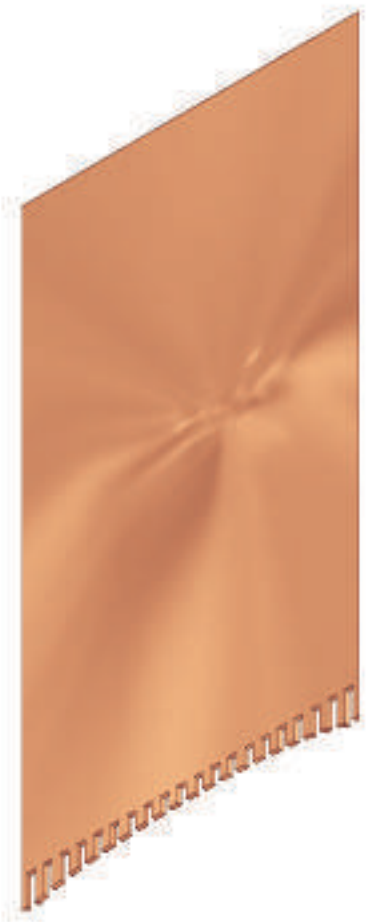
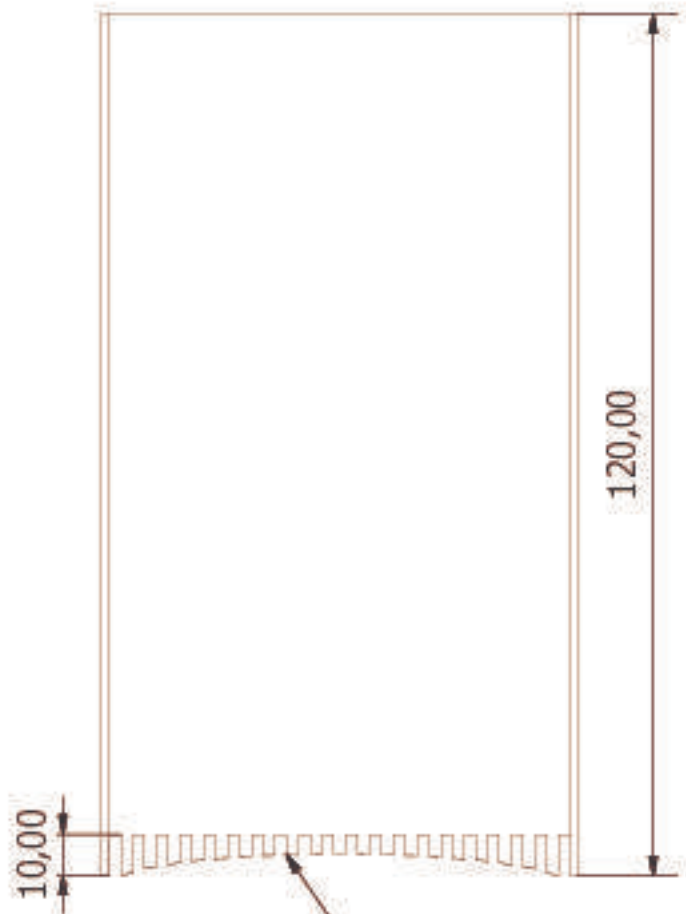
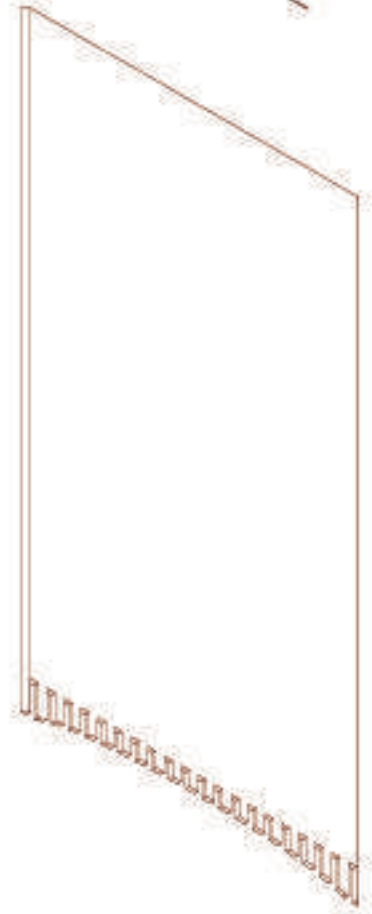
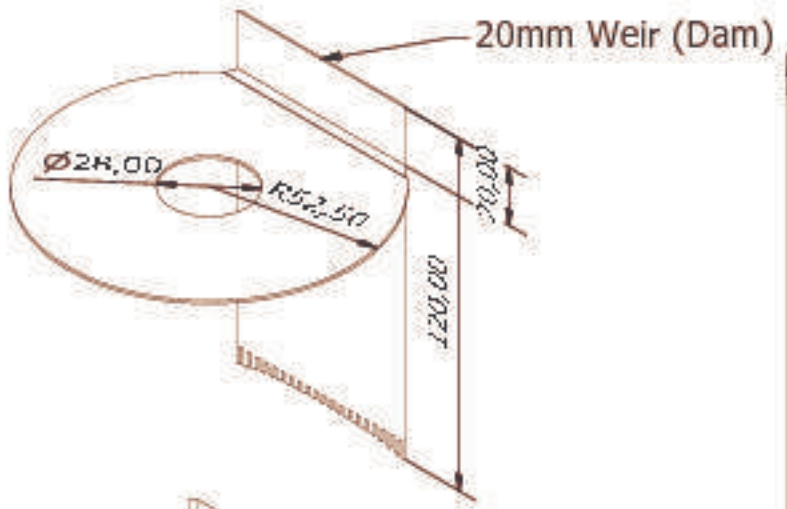
The tree shown on the right has a space of 100mm between the plates. The weirs (dams) are set at 20mm but as stated above could be increased. There are 2 types of downcomer used, as was the case with the original Magic Flute. Both are shown in detail on the proceeding pages.

The plate's circumference must be honed to the ID of the 4" casing, as was the spec for prefab of the perforated plates. This can be either soldered in full of solder tacked through the sight glass port. The leading edge of the downcomer plate does not need to be soldered in length to the inside wall of the 4" tube, but should be a neat fit to the inside wall.

The J-Type vapour trap at the bottom of the still can be folded from thin copper sheet or made from plates given in the dimensions. The bottom plate beneath the J-Type Trap has a radius to the radius of the 4" pipes wall. This could be extended a little either side (10mm - 15mm) to make soldering from the bottom easier.

What follows are plans on how to fabricate these plates...

Not saying that this is the only way to do it, but it is one of many...

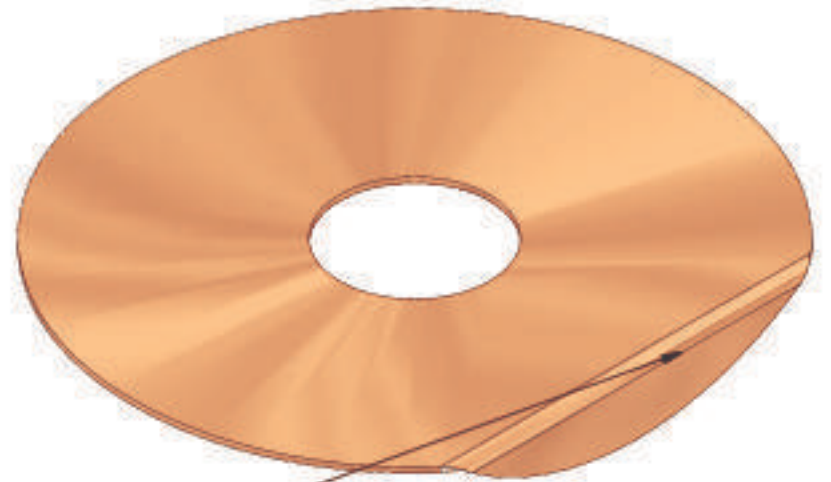
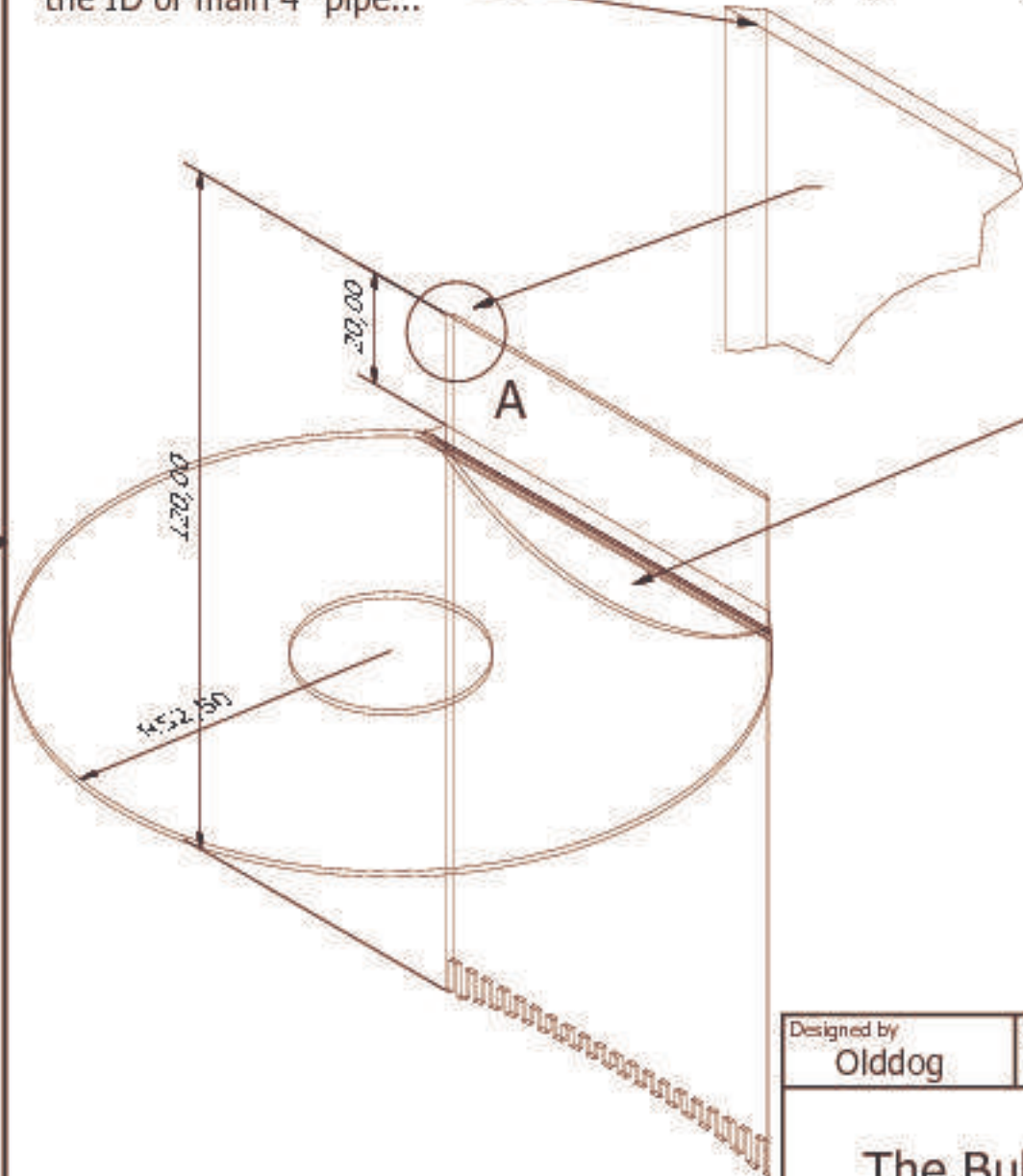


An 8mm curve cut from the bottom of the plate

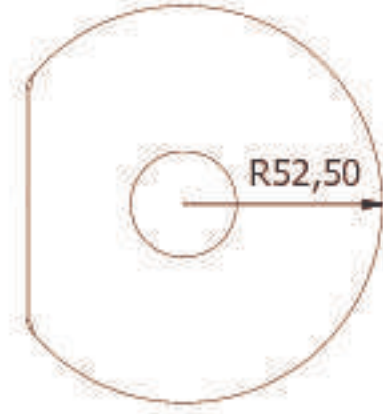
Designed by Olddog	Drawn by Samohon	Approved by	Date	Date 31/03/2011	
The Downcomer + Weir (Dam)...			105mm Downcomer Plate		Edition
					Sheet 1 / 5

Leading edge filed to the ID of main 4" pipe...

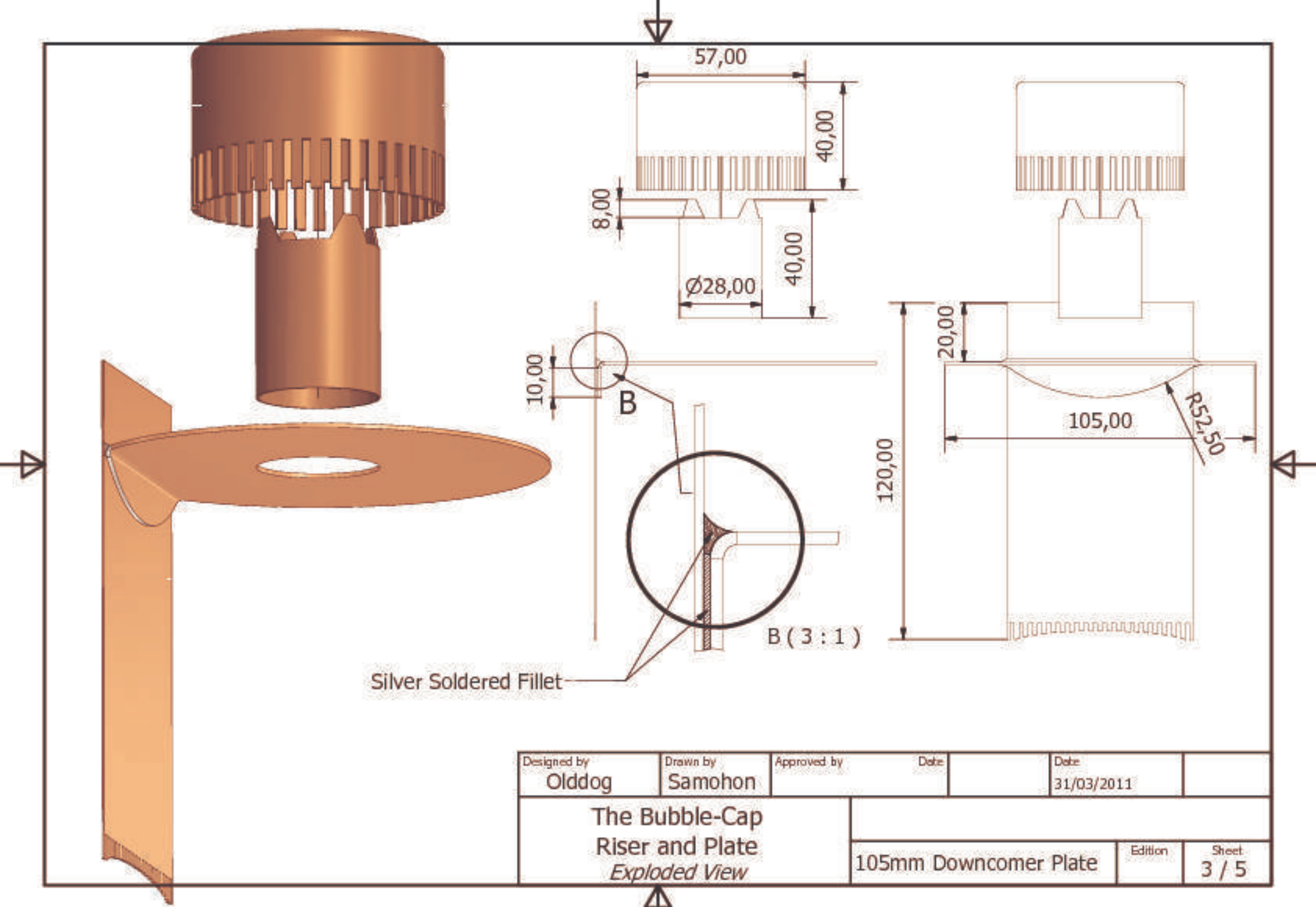
Blowup ( 5 : 1 )



10mm 90° Fold

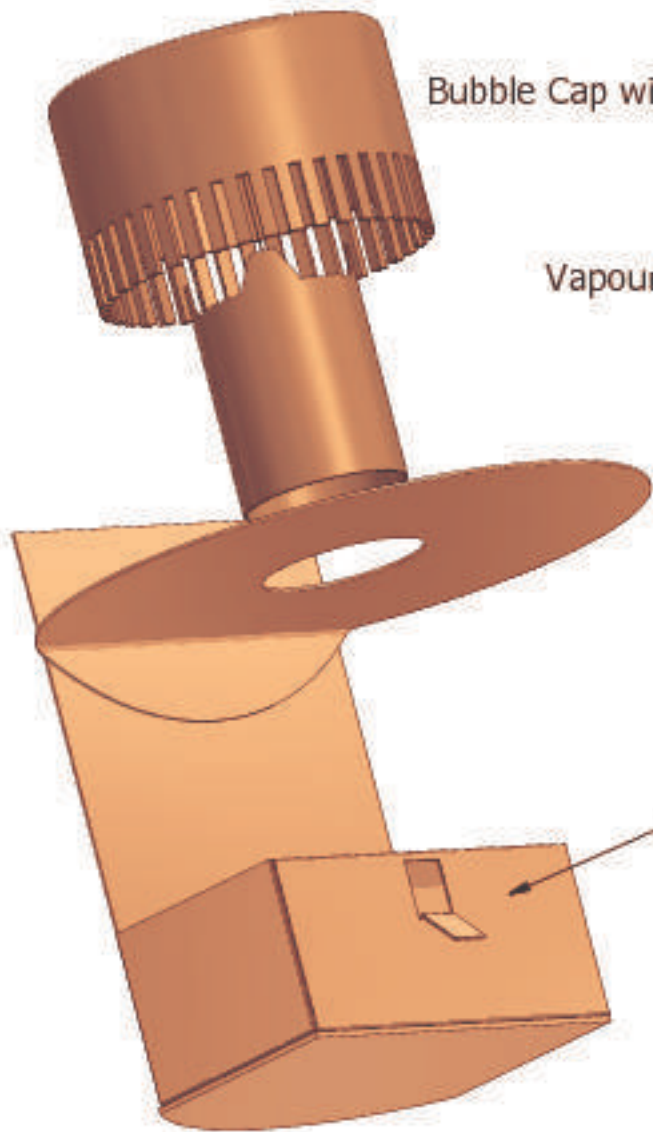


Designed by <b>Olddog</b>	Drawn by <b>Samohon</b>	Approved by	Date	Date 31/03/2011	
<b>The Bubble Plate</b>			105mm Downcomer Plate		Edition
					Sheet 2 / 5



Silver Soldered Fillet

Designed by Olddog	Drawn by Samohon	Approved by	Date	Date 31/03/2011	
The Bubble-Cap Riser and Plate <i>Exploded View</i>			105mm Downcomer Plate		
			Edition	Sheet 3 / 5	



Bubble Cap with 50 slots

Vapour Riser

The J-Type Trap

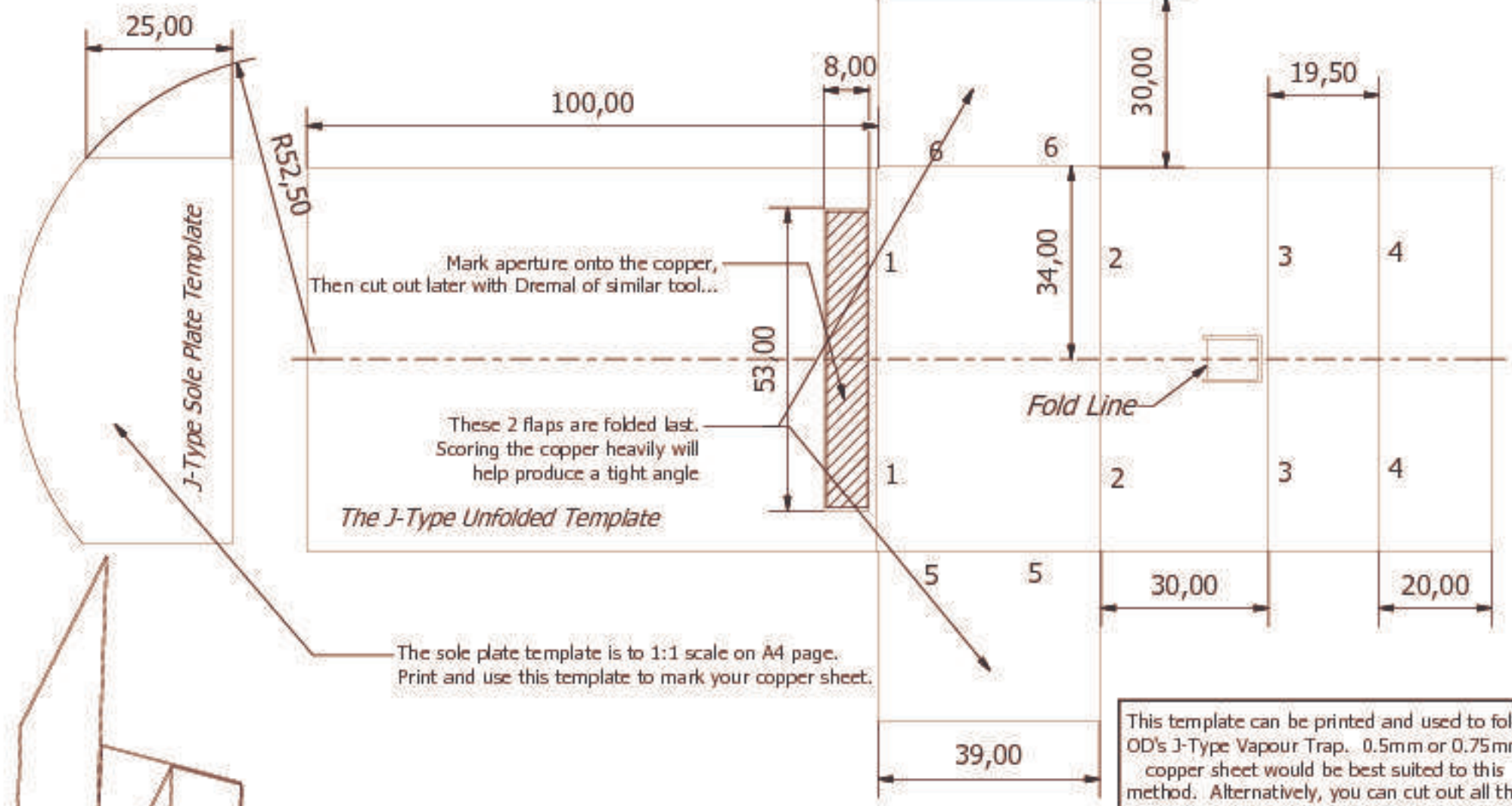
Designed by	Drawn by	Approved by	Date	Date	
Olddog	Samohon			31/03/2011	

OD's J-Type Trap  
*Exploded*

105mm Downcomer Plate

Edition

Sheet  
4 / 5



Mark aperture onto the copper,  
Then cut out later with Dremal or similar tool...

These 2 flaps are folded last.  
Scoring the copper heavily will  
help produce a tight angle

*The J-Type Unfolded Template*

The sole plate template is to 1:1 scale on A4 page.  
Print and use this template to mark your copper sheet.

*Fold Line*

This template can be printed and used to fold  
OD's J-Type Vapour Trap. 0.5mm or 0.75mm  
copper sheet would be best suited to this  
method. Alternatively, you can cut out all the  
parts and solder together... The choice is  
yours...

Designed by <b>Olddog</b>	Drawn by <b>Samohon</b>	Approved by	Date	Date 31/03/2011
<b>J-Type Vapour Trap</b> <i>Printable Template</i>				
			105mm Downcomer Plate	Sheet 5 / 5