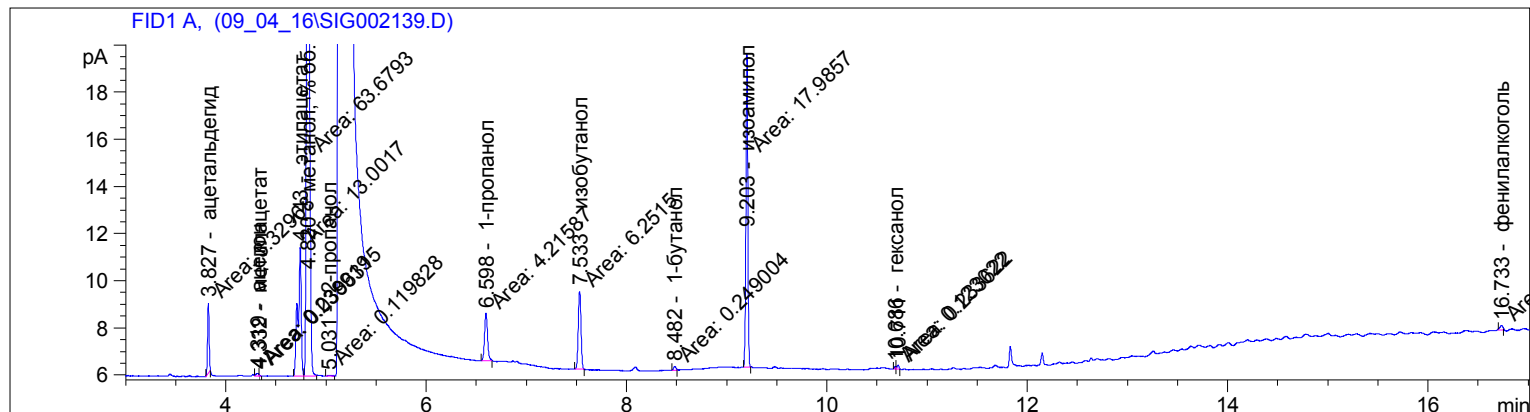


```

=====
Acq. Operator   :
Acq. Instrument : Instrument 1                      Location : Vial 1
Injection Date  : 09-Apr-16, 14:42:12           Inj       : 1
                                                    Inj Volume : Manually

Acq. Method     : C:\CHEM32\1\METHODS\VODKA_R.M
Last changed    : 4/9/2016 2:39:00 PM
                  (modified after loading)

Analysis Method : C:\CHEM32\1\METHODS\VODKA_R.M
Last changed    : 4/9/2016 3:02:51 PM
                  (modified after loading)
  
```



External Standard Report

```

Sorted By           :      Retention Time
Calib. Data Modified :      Saturday, April 09, 2016 1:01:15 PM
Multiplier:         :      1.5500
Dilution:           :      1.0000
Do not use Multiplier & Dilution Factor with ISTDs
  
```

Signal 1: FID1 A,

RetTime [min]	Sig	Type	Area [pA*s]	Amt/Area	Amount [мг/дм3]	Grp	Name
3.641	1		-	-	-		этиловый эфир
3.827	1	MM	3.32968	16.07806	82.97897		ацетальдегид
4.319	1	MF	2.38919e-1	6.44919	2.38829		ацетон
4.332	1	FM	3.96315e-2	2.13556	1.31185e-1		метилацетат
4.743	1	MF	13.00170	7.34750	148.07151		этилацетат
4.820	1	FM +	63.67933	6.92081e-4	6.83105e-2		метанол, % об.
4.950	1		-	-	-		2-бутанон
5.031	1	MM	1.19828e-1	4.91495	9.12872e-1		2-пропанол
6.259	1		-	-	-		изобутилацетат
6.310	1		-	-	-		2-бутанол
6.598	1	MM	4.21587	2.94628	19.25276		1-пропанол
6.635	1		-	-	-		этилбутират
6.990	1		-	-	-		кротональдегид
7.533	1	MM	6.25150	2.86369	27.74865		изобутанол
8.482	1	MM	2.49004e-1	2.78285	1.07406		1-бутанол
9.203	1	MM	17.98571	2.50897	69.94462		изоамилол
9.632	1		-	-	-		1-пентанол
10.686	1	MF	1.23022e-1	2.78910	5.31838e-1		гексанол

Sample Name: BDU № 7

RetTime [min]	Sig	Type	Area [pA*s]	Amt/Area	Amount [мг/дм3]	Grp	Name
12.826	1		-	-	-		бензальдегид
16.253	1		-	-	-		бензалкоголь
16.733	1	MM	3.71068e-1	1.21876	7.00976e-1		фенилалкоголь
27.385	1		-	-	-		диэтилфталат

Totals : 353.80403

2 Warnings or Errors :

Warning : Calibration warnings (see calibration table listing)

Warning : Calibrated compound(s) not found

=====
*** End of Report ***