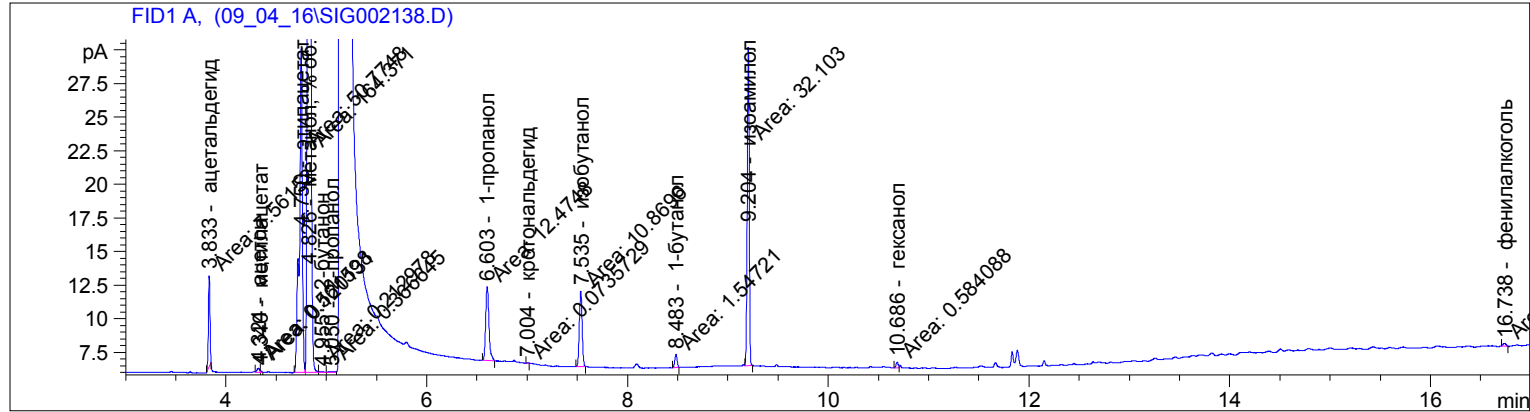


```

=====
Acq. Operator   :
Acq. Instrument : Instrument 1                      Location : Vial 1
Injection Date  : 09-Apr-16, 14:21:56             Inj       : 1
                                                    Inj Volume : Manually

Acq. Method     : C:\CHEM32\1\METHODS\VODKA_R.M
Last changed    : 4/9/2016 2:18:55 PM
                  (modified after loading)

Analysis Method : C:\CHEM32\1\METHODS\VODKA_R.M
Last changed    : 4/9/2016 2:42:48 PM
                  (modified after loading)
  
```



External Standard Report

```

Sorted By           :      Retention Time
Calib. Data Modified :      Saturday, April 09, 2016 1:01:15 PM
Multiplier:         :      1.4500
Dilution:           :      1.0000
Do not use Multiplier & Dilution Factor with ISTDs
  
```

Signal 1: FID1 A,

RetTime [min]	Sig	Type	Area [pA*s]	Amt/Area	Amount [мг/дм3]	Grp	Name
3.646	1		-	-	-		этиловый эфир
3.833	1	MM	7.56152	16.08598	176.37007		ацетальдегид
4.324	1	MF	5.61598e-1	7.07882	5.76441		ацетон
4.340	1	FM	1.20131e-1	12.71668	2.21512		метилацетат
4.750	1	MF	50.77482	7.35018	541.14568		этилацетат
4.826	1	FM +	164.37140	6.92916e-4	1.65148e-1		метанол, % об.
4.955	1	FM	2.12978e-1	4.87662	1.50599		2-бутанол
5.050	1	FM	3.66645e-1	4.77339	2.53770		2-пропанол
6.266	1		-	-	-		изобутилацетат
6.317	1		-	-	-		2-бутанол
6.603	1	MM	12.47476	2.94791	53.32297		1-пропанол
6.643	1		-	-	-		этилбутират
7.004	1	MM	7.35729e-2	11.67086	1.24506		кротональдегид
7.535	1	MM	10.86956	2.86466	45.14951		изобутанол
8.483	1	MM	1.54721	2.85241	6.39926		1-бутанол
9.204	1	MM	32.10301	2.51407	117.02838		изоамилол
9.644	1		-	-	-		1-пентанол
10.686	1	MF	5.84088e-1	2.91468	2.46852		гексанол

Sample Name: BDU № 6

RetTime [min]	Sig	Type	Area [pA*s]	Amt/Area	Amount [мг/дм3]	Grp	Name
12.841	1		-	-	-		бензальдегид
16.272	1		-	-	-		бензалкоголь
16.738	1	MM	4.22953e-1	1.21461	7.44896e-1		фенилалкоголь
27.417	1		-	-	-		диэтилфталат

Totals : 956.06270

2 Warnings or Errors :

Warning : Calibration warnings (see calibration table listing)

Warning : Calibrated compound(s) not found

=====  
\*\*\* End of Report \*\*\*