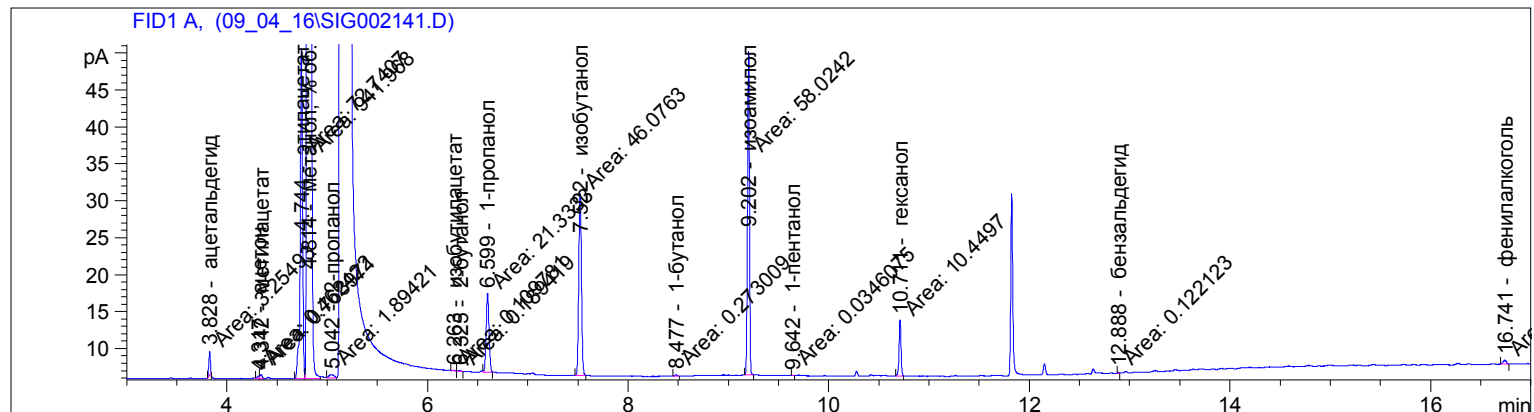


```

=====
Acq. Operator   :
Acq. Instrument : Instrument 1                      Location : Vial 1
Injection Date  : 09-Apr-16, 15:22:35           Inj      : 1
                                                Inj Volume : Manually

Acq. Method     : C:\CHEM32\1\METHODS\VODKA_R.M
Last changed    : 4/9/2016 3:19:19 PM
                  (modified after loading)

Analysis Method : C:\CHEM32\1\METHODS\VODKA_R.M
Last changed    : 4/9/2016 3:44:22 PM
                  (modified after loading)
    
```



External Standard Report

```

Sorted By           :      Retention Time
Calib. Data Modified :      Saturday, April 09, 2016 1:01:15 PM
Multiplier:         :      1.3000
Dilution:           :      1.0000
Do not use Multiplier & Dilution Factor with ISTDs
    
```

Signal 1: FID1 A,

RetTime [min]	Sig	Type	Area [pA*s]	Amt/Area	Amount [мг/дм3]	Grp	Name
3.637	1		-	-	-		этиловый эфир
3.828	1	MM	3.25493	16.07774	68.03144		ацетальдегид
4.317	1	MF	4.62422e-1	6.97884	4.19532		ацетон
4.342	1	FM	7.63971e-1	17.10684	16.98988		метилацетат
4.744	1	MF	72.74070	7.35045	695.08040		этилацетат
4.814	1	MF +	941.96753	6.93351e-4	8.49049e-1		метанол, % об.
4.944	1		-	-	-		2-бутанол
5.042	1	MM	1.89421	4.71797	11.61786		2-пропанол
6.263	1	MM	1.09781e-1	7.25437	1.03531		изобутилацетат
6.325	1	MM	1.89419e-1	3.59642	8.85597e-1		2-бутанол
6.599	1	MM	21.33328	2.94825	81.76466		1-пропанол
6.627	1		-	-	-		этилбутират
6.981	1		-	-	-		кротональдегид
7.522	1	MM	46.07632	2.86567	171.65125		изобутанол
8.477	1	MM	2.73009e-1	2.79014	9.90254e-1		1-бутанол
9.202	1	MM	58.02419	2.51697	189.85902		изоамилол
9.642	1	MM	3.46075e-2	2.39216	1.07623e-1		1-пентанол
10.711	1	MM	10.44971	2.94632	40.02458		гексанол

Sample Name: BDU № 9

RetTime [min]	Sig	Type	Area [pA*s]	Amt/Area	Amount [мг/дм3]	Grp	Name
12.888	1	MM	1.22123e-1	2.85388	4.53081e-1		бензальдегид
16.232	1		-	-	-		бензалкоголь
16.741	1	MM	1.15464	1.19578	1.79490		фенилалкоголь
27.350	1		-	-	-		диэтилфталат

Totals : 1285.33024

2 Warnings or Errors :

Warning : Calibration warnings (see calibration table listing)

Warning : Calibrated compound(s) not found

=====
*** End of Report ***